



BISON PRECAST

a Forterra brand

TECHNICAL GUIDANCE NOTE

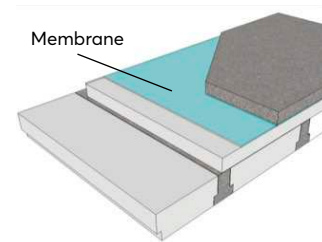
Jetfloor – Membranes and services over the floor - 29 April 2015

Membranes are not an intrinsic part of Jetfloor and can be omitted or included in accordance with the Client's specification and current Building Regulations. A continuous DPC should always be installed beneath units bearing onto walls in ground floor applications.

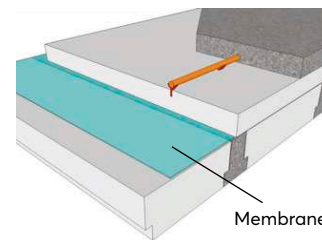
The presence or absence of a membrane does not alter the structural design or beam layout with New Jetfloor.

Before constructing Jetfloor with a membrane at least the following items should be considered:

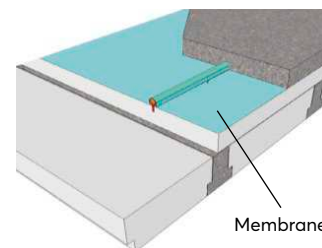
1. Laying the membrane directly onto the Jetfloor insulation overlay sheet may be suitable if there are no services above the overlay sheet.



2. Laying the membrane directly above the beams but beneath the insulation overlay sheet may be suitable where services are pinned onto the insulation overlay sheet. This avoids the possibility of puncturing the membrane with pipe-securing pins.



3. Laying the membranes over the insulation overlay sheet and over the services may be considered, but this method may introduce voids around the pipes which could weaken the concrete topping and create the possibility of trapping gas leaks in the area of the pipe. Care must be taken if this method is adopted. The size of void created should be assessed with regard to the gauge of membrane being used and method of securing the services (e.g. plastic 'chairs' may create larger voids when a membrane is draped over them, especially with a heavy gauge gas membrane).



Installation of membranes must be in accordance with the manufacturer's recommendations.